

# The SoundCam in use for energy supply



A parameter for the "noise" is the sound pressure level. The frequency also plays an important role, e.g. in the location of partial discharge. For other tasks it is important to locate the peak levels and possible main sound sources.

The SoundCam helps you with all these challenges. The advantages of the SoundCam become clear very quickly. In contrast to conventional measuring devices, the results are immediately displayed in color on a camera video. Analyses from a greater distance or from a smaller distance can be carried out without problems.

## The added value of the SoundCam:

- Quick and easy localization
- Immediately available images and videos
- Analysis from a safe distance
- Suppression of background noise
- Comparative measurements

## Application: Defective insulators

In a switching station there are many cables and just as many insulators. The insulators can be damaged due to age or by the static or dynamic stresses. To avoid failures, they are regularly checked during maintenance work (visual inspection). This inspection is very costly and time-consuming. Since defective insulators have a different acoustic radiation pattern, testing with the SoundCam is quick and inexpensive. This is done at a safe distance from the high voltage.

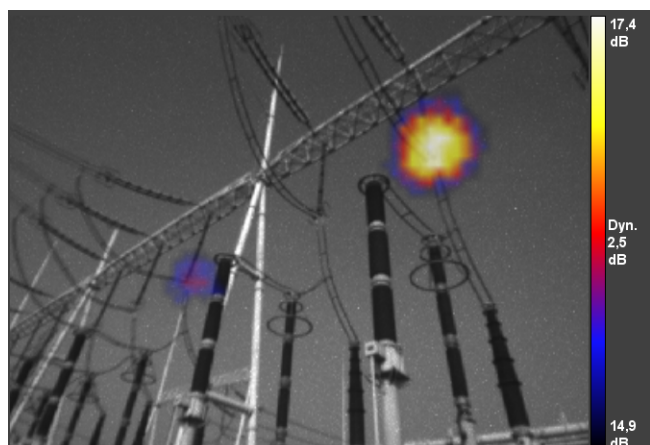


Worn insulator



## Other applications of the SoundCam:

- Detection of compressed air leaks
- Sound reduction
- Tightness at window, housing, ...
- Locating crackling, rattling, ...
- Product development
- Preventive maintenance



Discharge of the transmission line

## Your personal contact



Dieter Müller  
+49 931 49708-512  
[mueller@woelfel.de](mailto:mueller@woelfel.de)